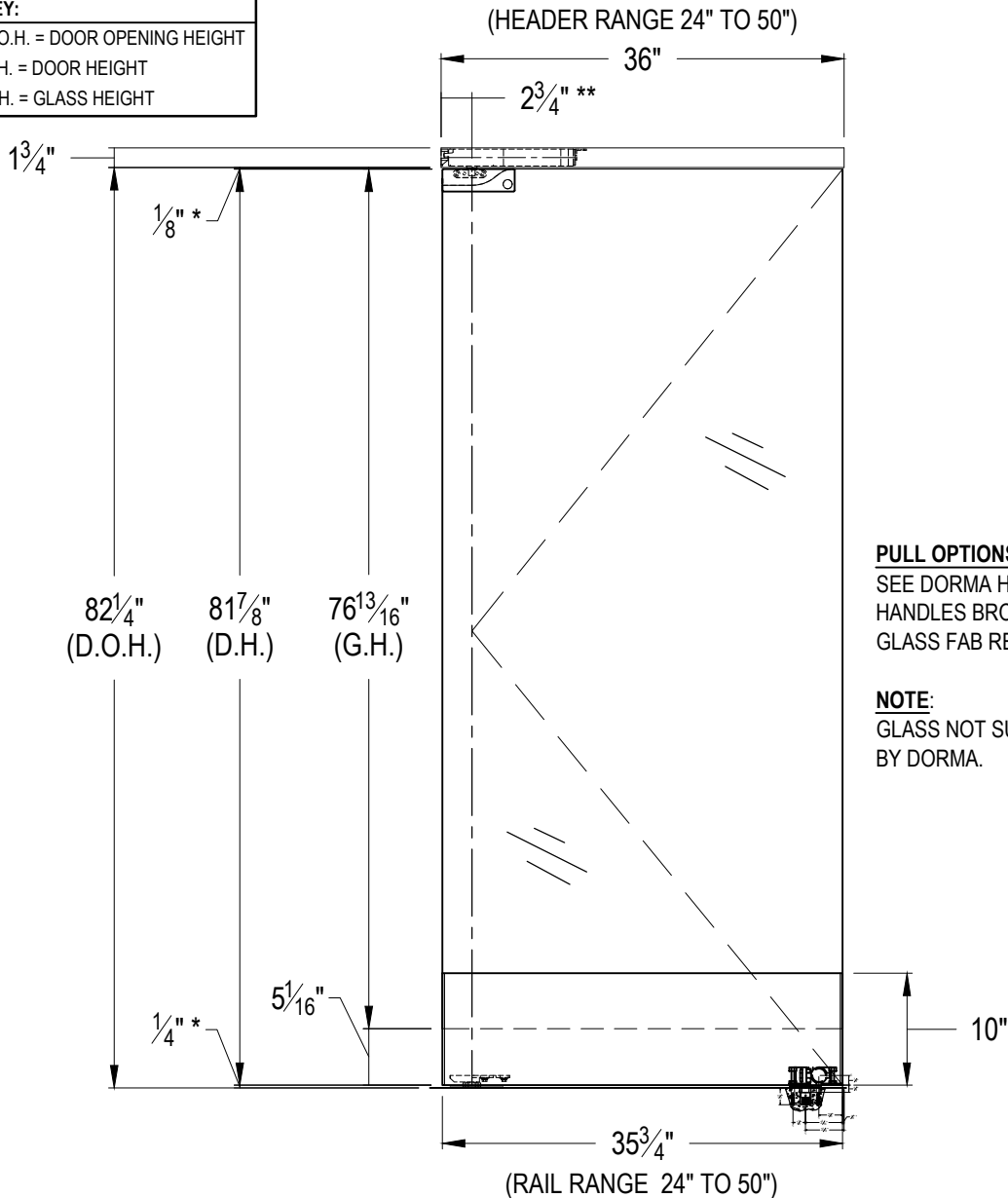


D.O.H. = DOOR OPENING HEIGHT
D.H. = DOOR HEIGHT
G.H. = GLASS HEIGHT

D.H. = DOOR HEIGHT

G.H. = GLASS HEIGHT



NOTE:
GLASS NOT SUPPLIED
BY DORMA.



REV.	DATE
1	08/16/16

TOLERANCES
UNLESS OTHERWISE
SPECIFIED:
DECIMAL .XXX = $\pm .005$
.XX = $\pm .01$
FRACTION $\pm 1/16$
DEGREE $\pm 3^\circ$

DORMA EASI-FRONT'S DOOR SET
TYPE "BP" WITH LOCK - BP75-10S-PT22-01_45-RTS-U

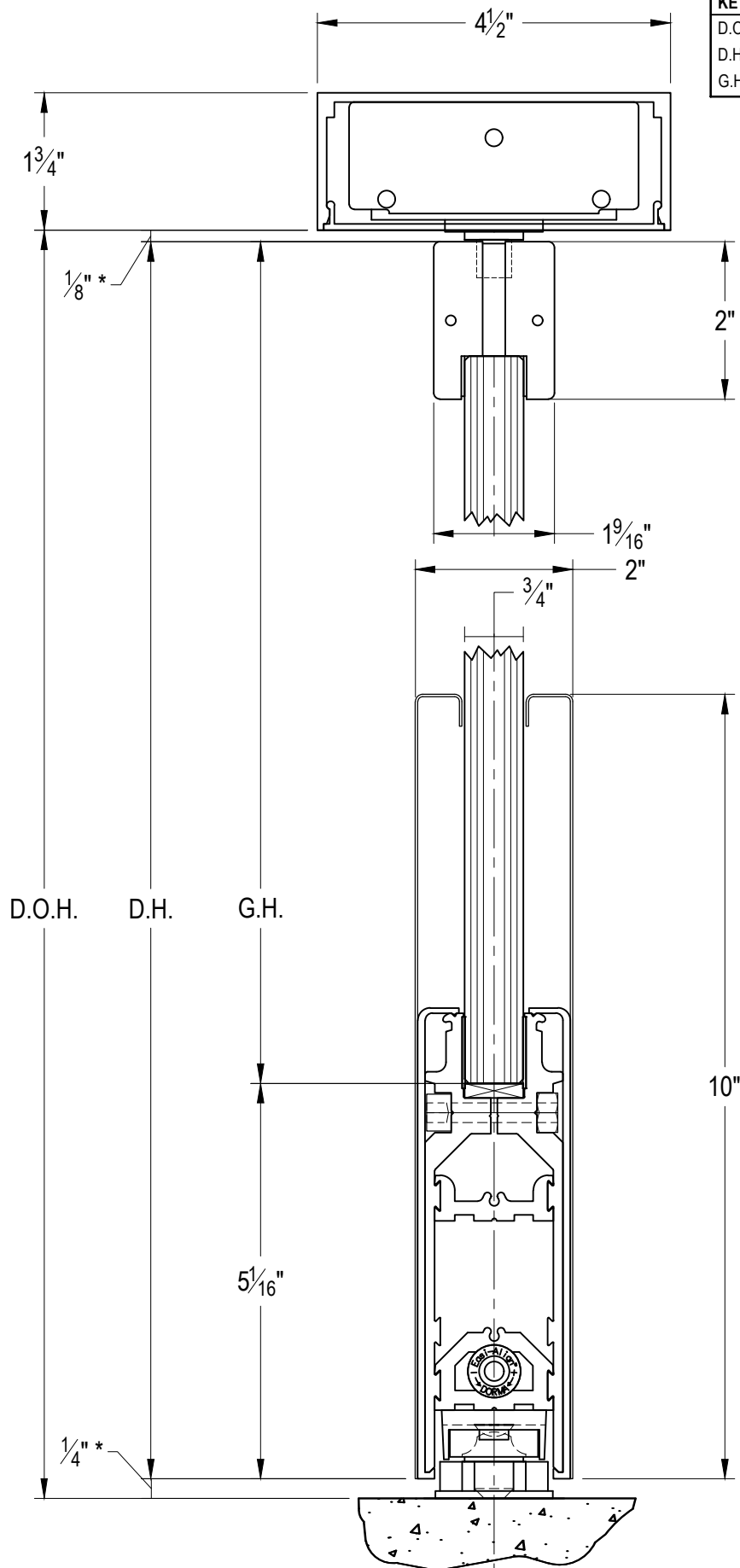
PROPRIETARY AND CONFIDENTIAL

This document and information is the proprietary property of DORMA GLASS. Any party, by accepting this document and information, assumes custody and control hereof and agrees that such is given in confidence and this document and the information set forth therein will not be copied, used or reproduced in whole or in part, nor its contents revealed to any person in any manner that would cause the loss or impairment of the owner's legal rights including, but not limited to, the owner's common law copyrights thereto.

QTY. 1 - #233.042 4- $\frac{1}{2}$ " HEADER PREPPED FOR RTS88 CLOSERS [SPECIFY FUNCTION]
QTY. 2 - #833.113 PT-22 TOP PATCH FITTING
QTY. 2 - #225.128 10" BOTTOM RAIL WITH #928.055 PIVOT AND #925.019 LOCK
QTY. 2 - #225.998 MORTISE THUMBTURN CYLINDER WITH SPLIT RING
QTY. 2 - #225.999 MORTISE KEY CYLINDER WITH SPLIT RING
QTY. 2 - #932.033 1- $\frac{1}{2}$ " DUST PROOF STRIKE

**** PIVOT POINT CENTER LINE IS FROM FINISHED JAMB.**

DRAWN BY: JA
DATE: 09.01.15
SCALE: $\frac{3}{4}"=1'-0"$
SHEET: 1 OF 3
DRAWING NO. BP75-10S-PT22-01_45-RTS-U
DO NOT SCALE DRAWING



KEY:	
D.O.H. =	DOOR OPENING HEIGHT
D.H. =	DOOR HEIGHT
G.H. =	GLASS HEIGHT



1520 Jabez Run
Suite 303
Millersville, MD 21108
800.451.0649

REV.	DATE
1	08/16/16

TOLERANCES UNLESS OTHERWISE SPECIFIED:	
DECIMAL .XXX = ± .005	XX = ± .01
FRACTION ± 1/16	DEGREE ± 3°

DORMA EASI-FRONTS DOOR SET TYPE "BP" WITH LOCK - BP75-10S-PT22-01_45-RTS-U	
<p>PROPRIETARY AND CONFIDENTIAL</p> <p>This document and information is the proprietary property of DORMA GLASS. Any party, by accepting this document and information, assumes custody and control hereof and agrees that such is given in confidence and this document and the information set forth therein will not be copied, used or reproduced in whole or in part, nor its contents revealed to any person in any manner that would cause the loss or impairment of the owner's legal rights including, but not limited to, the owner's common law copyrights thereto.</p>	

DRAWN BY: JA
DATE: 09.01.15
SCALE: 1:2
SHEET: 3 OF 3
DRAWING NO. BP75-10S-PT22-01_45-RTS-U
DO NOT SCALE DRAWING

* OPENING CLEARANCES MAY VARY BASED ON SITE CONDITIONS. STANDARD CLEARANCES SHOWN ARE USED IN FORMULA.

KEY:

D.O.H. = DOOR OPENING HEIGHT

D.H. = DOOR HEIGHT

G.H. = GLASS HEIGHT

DORMA
1520 Jabez Run
Suite 303
Millersville, MD 21108
800.451.0649

REV.	DATE
1	08/16/16

TOLERANCES
UNLESS OTHERWISE SPECIFIED:

DECIMAL .XXX = ± .005

.XX = ± .01

FRACTION ± 1/16

DEGREE ± 3°

DORMA EASI-FRONT DOOR SET TYPE "BP" WITH LOCK - BP75-10S-PT22-01_45-RTS-U

PROPRIETARY AND CONFIDENTIAL
This document and information is the proprietary property of DORMA GLASS. Any party, by accepting this document and information, assumes custody and control hereof and agrees that such is given in confidence and this document and the information set forth therein will not be copied, used or reproduced in whole or in part, nor its contents revealed to any person in any manner that would cause the loss or impairment of the owner's legal rights including, but not limited to, the owner's common law copyrights thereto.

DRAWN BY: JA

DATE: 09.01.15

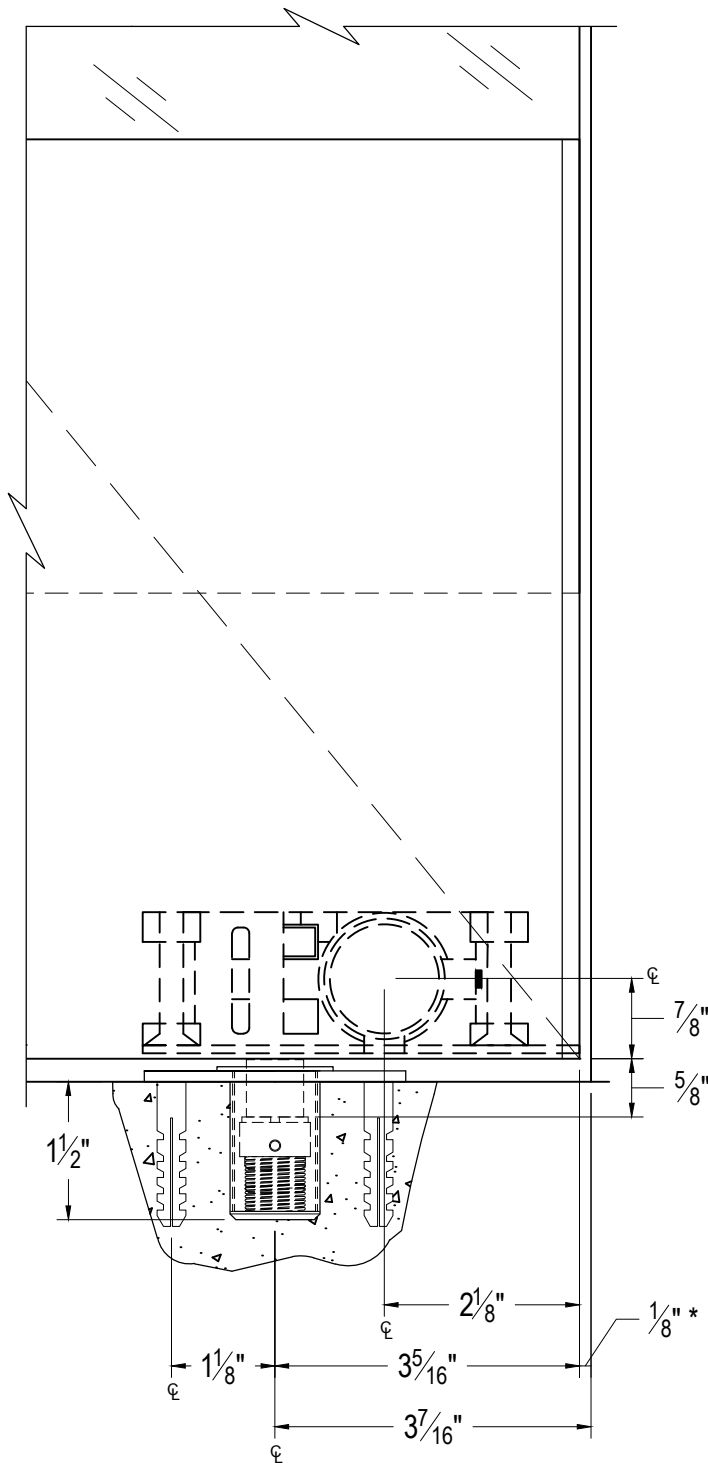
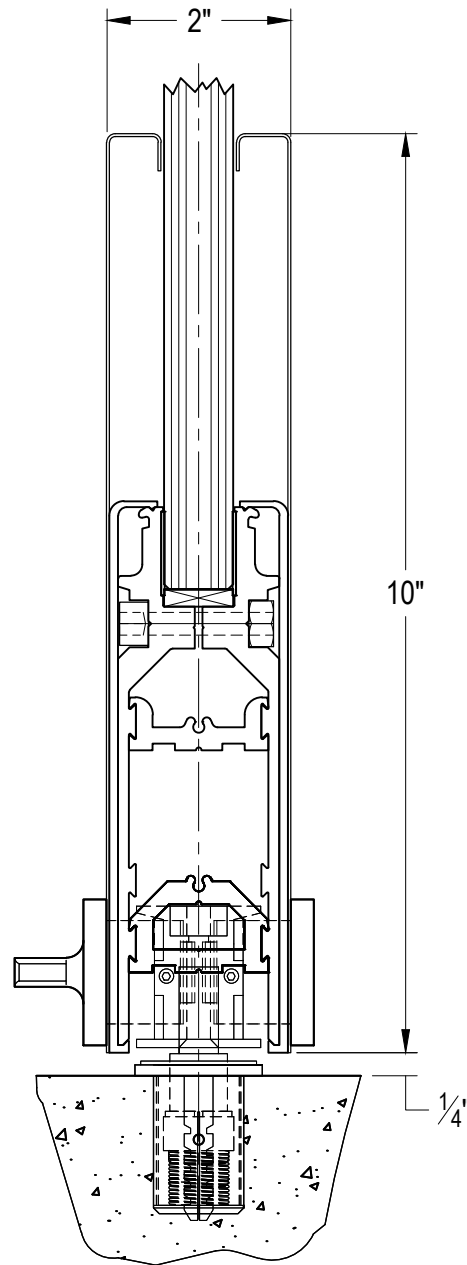
SCALE: 1:2

SHEET: 3 OF 3

DRAWING NO.

BP75-10S-PT22-01_45-RTS-U

DO NOT SCALE DRAWING

**ELEVATION VIEW OF LOCK LOCATION****BOTTOM RAIL SECTION
AT LOCK LOCATION****NOTE:** DIMENSIONS SHOWN INCLUDE THE ENDCAP AND THE COVER.

* OPENING CLEARANCES MAY VARY BASED ON SITE CONDITIONS. STANDARD CLEARANCES SHOWN ARE USED IN FORMULA.